



SEKOiA
FORM-BUILDER

MANDATORY

TOGGLED ON

- Mandatory
- Allow comment
- Allow more choices
- Activate score

1 Type of Untoward Event

- Incident (not resulting in injury)
- Accident not requiring hospital admission
- Accident requiring hospital admission
- Sudden death
- Safeguarding Allegation (SA)
- Service Incident (SI)
- Fire (F)

NEXT

MANDATORY

TOGGLED OFF

- Mandatory
- Allow comment
- Allow more choices
- Activate score

1 Type of Untoward Event

- Incident (not resulting in injury)
- Accident not requiring hospital admission
- Accident requiring hospital admission
- Sudden death
- Safeguarding Allegation (SA)
- Service Incident (SI)
- Fire (F)

NEXT

ALLOW COMMENT

- Mandatory
- Allow comment
- Allow more choices
- Activate score

3 What was happening prior to the incident?

- Resident walking in corridor
- Resident in lounge/ dining area
- Resident in activity
- Resident just woke up
- Resident just returned from social leave
- Other (Add in comment)

Comment

NEXT

ALLOW MORE CHOICES

- Mandatory
- Allow comment
- Allow more choices
- Activate score

Was Medical assistance required?

- First Aid in the home
- GP or Out-of-Hours visit
- Emergency services
- Other

NEXT

ACTIVATE SCORE

- Mandatory
- Allow comment
- Allow more choices
- Activate score

✓ Build/Weight for Height

- Average (BMI=20- 24.9) (0)
- Above average (BMI = 25- 29.9) (1)
- Obese (BMI > 30) (2)
- Below average (BMI < 20) (3)

Score 2

NEXT

14 Additional comments and time

Total score 31

Date

29/06/2021



17:35



Additional comments

ADD

HELP TEXT & IMAGE

Help text

No help text added

Image



Help text

If the blood glucose level is outside of the NICE recommended parameters given below, please report this to a nurse.

Image

target blood glucose level ranges

Upon waking	Before meals (pre prandial)	At least 90 minutes after meals (post prandial)
	4.0 to 5.9 mmol/L	under 7.8 mmol/L
	4 to 7 mmol/L	under 8.5 mmol/L
5 to 7 mmol/L	4 to 7 mmol/L	5 to 9 mmol/L
4 to 7 mmol/L	4 to 7 mmol/L	5 to 9 mmol/L

DELETE

2 Blood glucose (Health measurement)

If the blood glucose level is outside of the NICE recommended parameters given below, please report this to a nurse.

NICE recommended target blood glucose level ranges

Target Levels by Type	Upon waking	Before meals (pre prandial)	At least 90 minutes after meals (post prandial)
Non-diabetic*		4.0 to 5.9 mmol/L	under 7.8 mmol/L
Type 2 diabetes		4 to 7 mmol/L	under 8.5 mmol/L
Type 1 diabetes	5 to 7 mmol/L	4 to 7 mmol/L	5 to 9 mmol/L
Children w/ type 1 diabetes	4 to 7 mmol/L	4 to 7 mmol/L	5 to 9 mmol/L

Blood glucose mmol/l

Date

Hour

NEXT

ADD QUESTION

ADD QUESTION

☰ Answer options (Multiple choice)

⦿ Points on an image

📷 Answer with one or more pictures

🔢 Number

☰ Text

❤ Health measurement

📊 Calculation



Pre-set choices (very good for structure, time saving)



Body Maps



Wound Management, Activity Record



Temperature, Size (any numerical unit)



Open comment field



Weight, Body Temperature, Blood Pressure, Blood Glucose (Sugar), Oxygen Saturation, Pulse, Respiratory Rate



BMI, Weight Loss %, MUST Tool

ANSWER OPTIONS (MULTIPLE CHOICE)

ADD QUESTION

☰ Answer options (Multiple choice)

⊗ Points on an image

📷 Answer with one or more pictures

🔢 Number

☰ Text

❤️ Health measurement

🔢 Calculation



✓ Was Medical assistance required?

- First Aid in the home
- GP or Out-of-Hours visit
- Emergency services
- Other

NEXT

✓ Was Medical assistance required?

- First Aid in the home
- GP or Out-of-Hours visit
- Emergency services
- Other

NEXT

POINTS ON AN IMAGE

ADD QUESTION

☰ Answer options (Multiple choice)

📍 Points on an image

📷 Answer with one or more pictures

🔢 Number

☰ Text

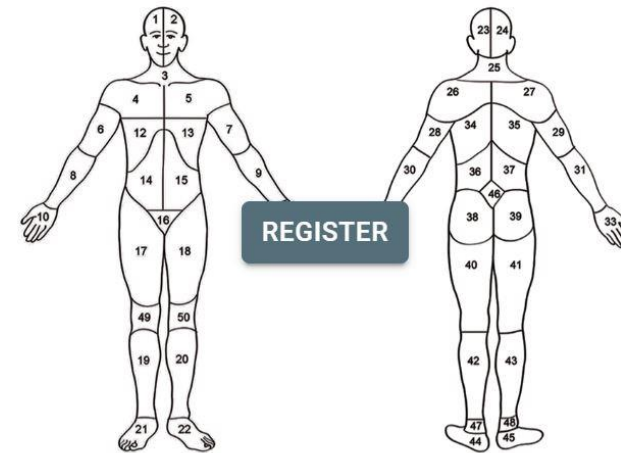
❤ Health measurement

🔢 Calculation



4 Body Map

Select one or more points on the image



NEXT

POINTS ON AN IMAGE (contd.)

✕ Body Map

Latest registrations
2

CLEAR SAVE

The interface displays a body map with two views: front and back. The front view has 21 numbered points (1-21) and the back view has 28 numbered points (23-50). Points 8, 9, 21, and 22 are marked with blue circles, while points 2 and 48 are marked with red circles. A registration history table on the right lists three entries.

○	now	Neha
○	25 June 2021 13:47	Neha
○	24 June 2021 13:11	Rachel

ANSWER WITH ONE OR MORE PICTURES

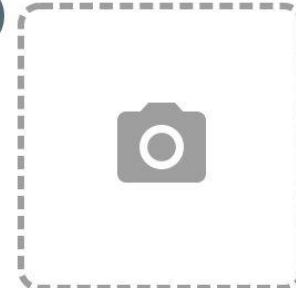
ADD QUESTION

- ☰ Answer options (Multiple choice)
- ⊗ Points on an image
- 📷 Answer with one or more pictures
- 🔢 Number
- ☰ Text
- ❤️ Health measurement
- 🧮 Calculation



✔ Picture taken?

Upload one or more photos



NEXT

ANSWER WITH ONE OR MORE PICTURES (contd.)

Registered by

Neha

Activity

Arts and Crafts

Did the resident participate in the arranged activity?

Yes

Picture taken?



NUMBER

ADD QUESTION

☰ Answer options (Multiple choice)

📍 Points on an image

📷 Answer with one or more pictures

2 Number

☰ Text

❤ Health measurement

🧮 Calculation



4 Fridge Temperature

°C

NEXT

✓ Size of wound

cms

NEXT

TEXT

ADD QUESTION

☰ Answer options (Multiple choice)

🔗 Points on an image

📷 Answer with one or more pictures

🔢 Number

☰ Text

❤️ Health measurement

🔢 Calculation



✓ Telephone Log - Who called?

Text

Sarah, Activity co-ordinator

NEXT

✓ What was the message?

Text

To confirm that transport for the cinema trip for Thursday has been confirmed.

NEXT

HEALTH MEASUREMENT

ADD QUESTION

☰ Answer options (Multiple choice)

📍 Points on an image

📷 Answer with one or more pictures

🔢 Number

☰ Text

❤️ Health measurement

📊 Calculation



✓ Body temperature (Health measurement)

If the Temperature is above 38C, please report this to a Nurse

Body temperature °C

Date

Hour

NEXT

✓ Saturation (Health measurement)

If the Saturation is below 94%, please report this to a Nurse

Saturation %

Date

Hour

NEXT

CALCULATION

ADD QUESTION

- ☰ Answer options (Multiple choice)
- 🔗 Points on an image
- 📷 Answer with one or more pictures
- 🔢 Number
- ☰ Text
- ❤ Health measurement
- 🔢 Calculation



BMI Calculator

UK Care Provider

Height

Weight (Health measurement)


BMI

Mandatory

Allow comment

Help text
No help text added

Image



Calculation

Height (Q1) Weight (Health measurement) (Q2)

$Q2 / (Q1 * Q1)$ SAVE

DELETE RENAME

Additional comments and time

CALCULATION

✓ Height

1.65 metres

NEXT

✓ Weight (Health measurement)

PREVIOUS MEASUREMENTS

Weight
64 Kg

Date
17/08/2021

Hour
11:44

NEXT

✓ BMI

23.507805325987146

NEXT

BMI	Nutritional status
Below 18.5	Underweight
18.5–24.9	Normal weight
25.0–29.9	Pre-obesity
30.0–34.9	Obesity class I
35.0–39.9	Obesity class II
Above 40	Obesity class III

Date
17/08/2021

11:44

Additional comments
BMI with the 'Normal weight' range. |

ADD